



Beyond silos integrating oral health into early childhood health checks

Christine Morris
Director Health Promotion
South Australian Dental Service

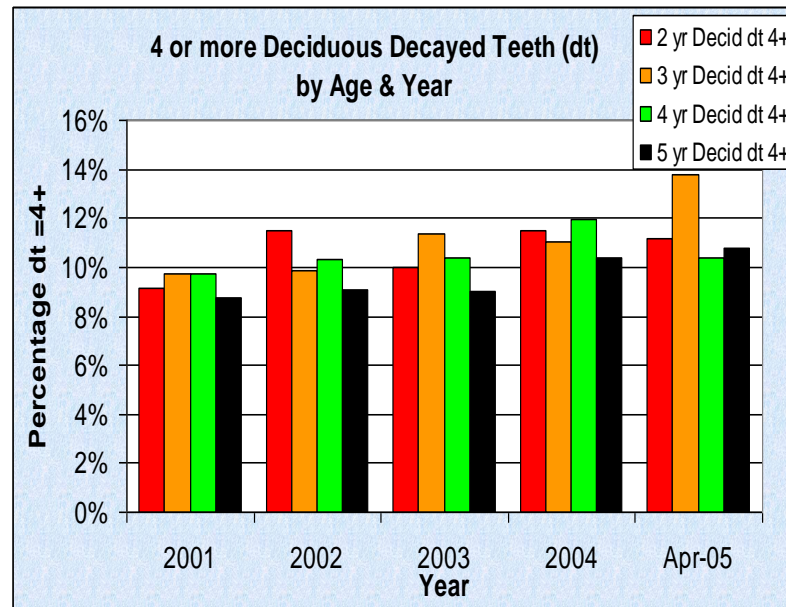


**Government
of South Australia**

SA Health

Dental Caries in South Australia

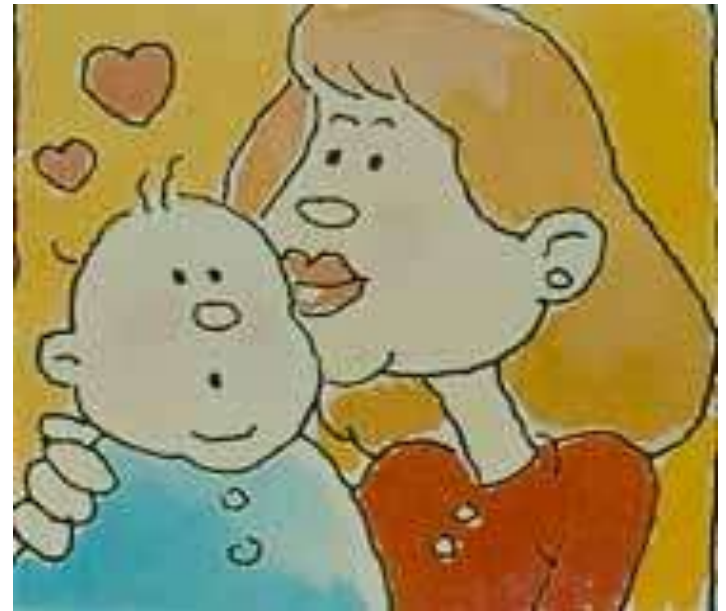
		YEAR					
dt = 4+		2001	2002	2003	2004	Apr-05	
2 yr Decid dt	4+	9.1%	11.5%	10.0%	11.5%	11.2%	Percent
3 yr Decid dt	4+	9.7%	9.9%	11.4%	11.0%	13.8%	Percent
4 yr Decid dt	4+	9.7%	10.3%	10.4%	12.0%	10.4%	Percent
5 yr Decid dt	4+	8.8%	9.0%	9.0%	10.4%	10.8%	Percent



The problem: severe dental caries affecting young children



Early Childhood Caries is a complex disease with social, behavioural and biological determinants



Rationale & Aim of Population Oral Health Program



Process for Lift the Lip

- > Screening for tooth decay involves simply lifting the top lip and checking the outer surface of the front teeth
- > If identified early, preventive measures can be undertaken to prevent the progress of decay



Lift the Lip Project

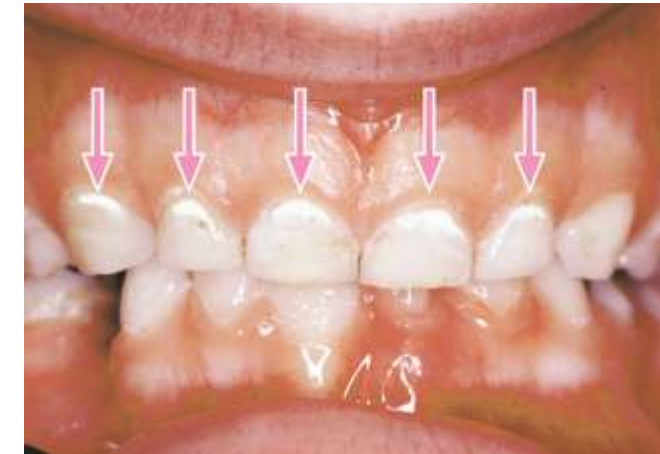
Healthy teeth

No referral required



Early signs of decay

White lines along the gum line can be the beginning of tooth decay. Please refer for a dental visit.



More advanced decay

Brown areas or decayed spots. Please refer for a dental visit.





Partnerships & Training

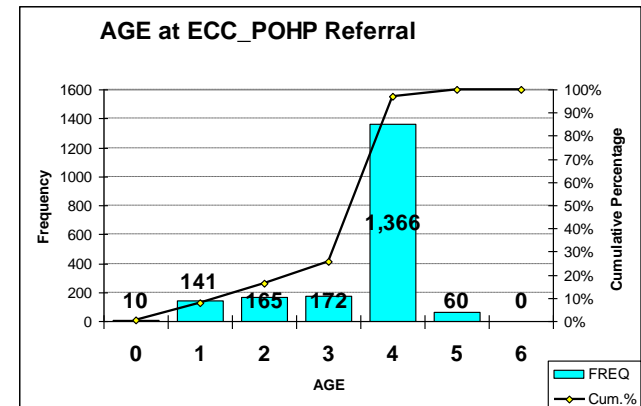
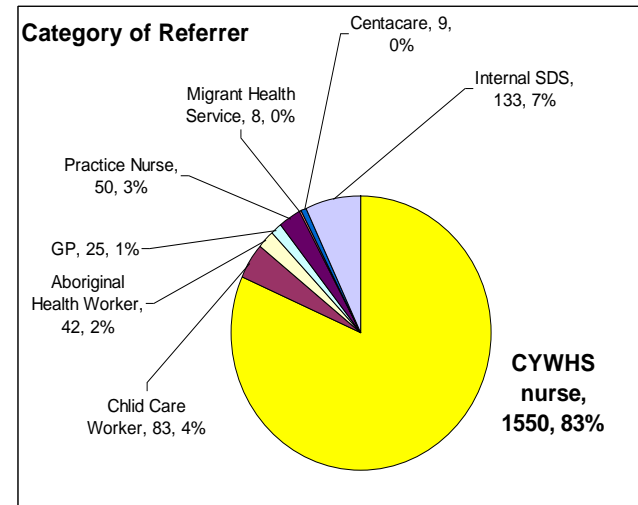
Partnerships with other agencies are key to the success of this program

Training

- >3 Oral Health Education evenings have been held for Divisions of GPs
- >Over 200 child and maternal health nurses
- >170 practice, immunisation nurses
- >Aboriginal health workers
- >Midwives in public hospitals have attended oral health in pregnancy information sessions
- >All School Dental staff
- >Migrant health staff, childcare centres

Results

- > 2,200 referrals to March 10
- > Mostly 4 year olds
- > Majority of referrals so far from nurses
- > Twice as much caries as the general school dental population
- > Higher percentage of Aboriginal children (10%) compared to general school dental population (4%)



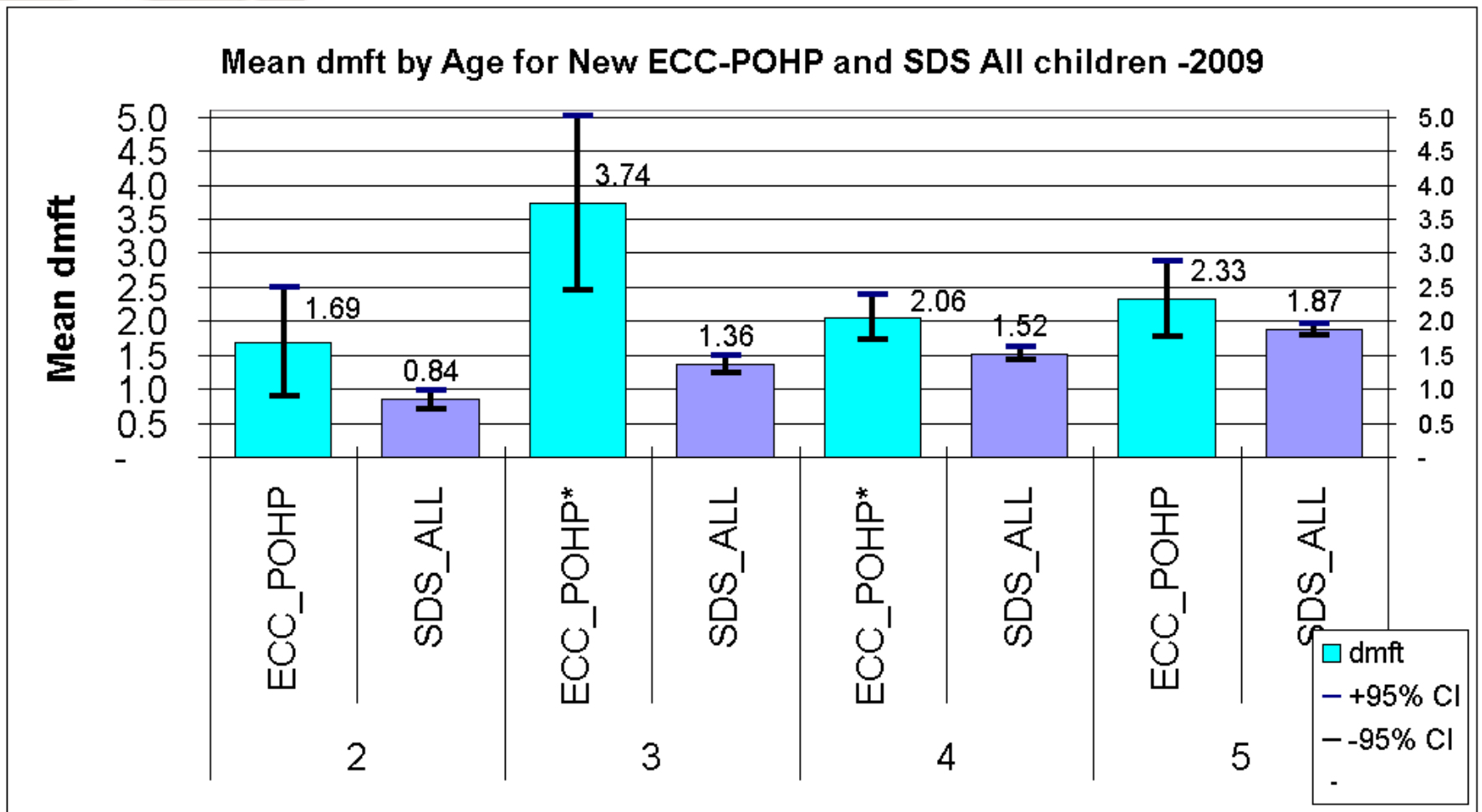


Time from Registration to School Dental Service First Visit

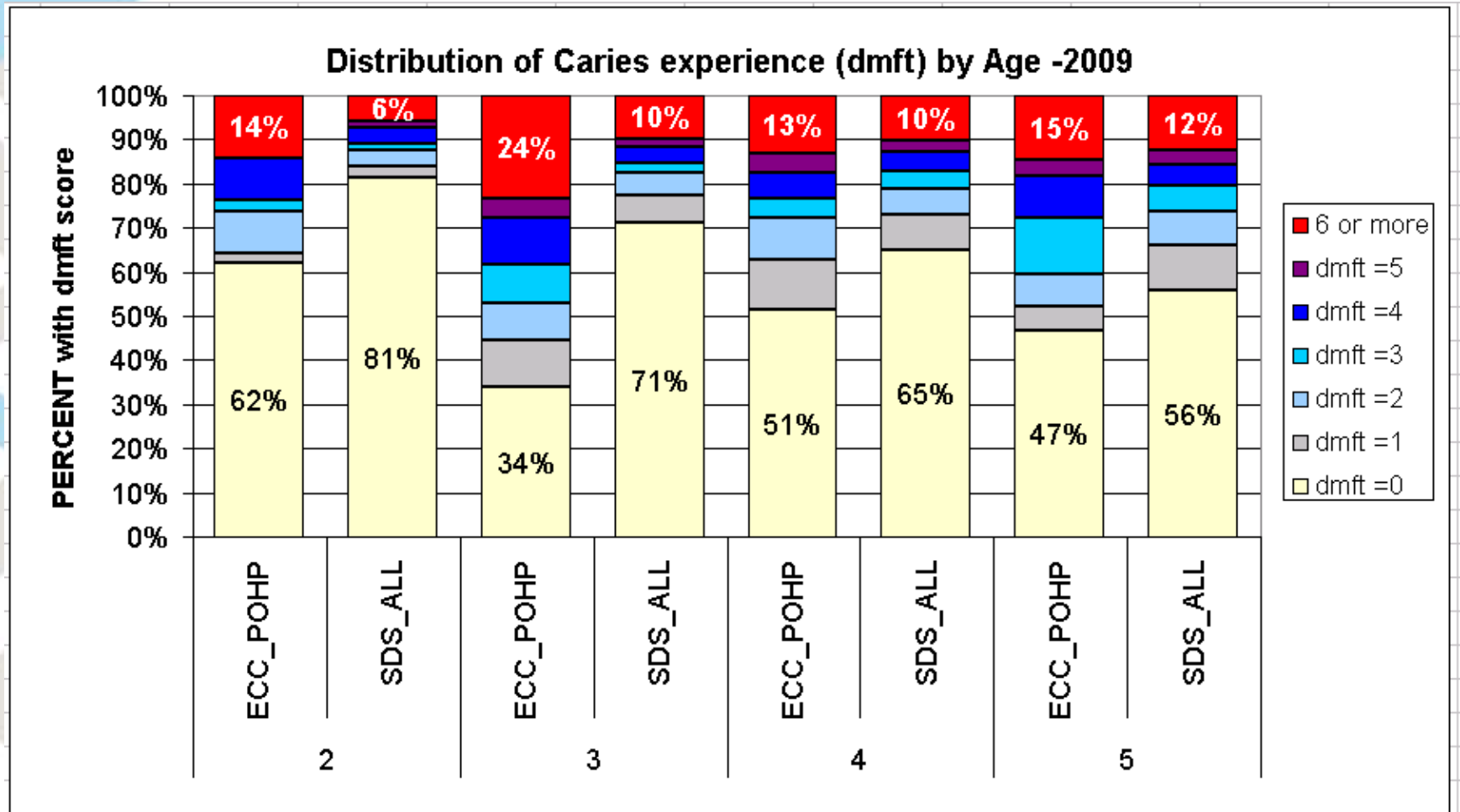
- > 53% are accessing School Dental Care within 5 weeks
- > 81% access dental care within 10 weeks of registration
- > 91% within 16 weeks
- > 4% take more than 6 mths to access School Dental Care

Mean decay experience

- > Statistically Significantly worse for ages 3 & 4 years



Decay Distribution



Cleaning your child's teeth

You can start cleaning your child's teeth with a clean cloth or a small, soft toothbrush.



Clean your child's teeth as soon as they come through.



Toothpaste

0 – 17 months no toothpaste



18 months – 5 years, use low fluoride children's toothpaste



Lift the lip

Lift your child's top lip once a month to check for early signs of tooth decay. White lines along the gum line can be the beginning of tooth decay. Please seek dental advice if you notice any changes in your child's teeth.



For more information contact

**SA Dental Service
Health Promotion Division**

8222 9016

www.sadental.sa.gov.au

**Children, Youth & Women's
Health Service**

Child and Youth Health

8303 1500

24 hr Parent Helpline 1300 364 100

Healthy Smile  Healthy Life

08/08

HP1

Give your child's teeth a healthy start



Government of South Australia
SA Health

Stop your child's teeth rotting!



Breastmilk is best



If you are not breastfeeding, use infant formula

Around 6 months, your child can start to eat from a spoon. Start with smooth foods.



Give your child



Breastmilk or formula



Tap water after 6 months



Cow's milk after 1 year

Don't give your child



Soft drink



Fruit juice



Flavoured milk



Cordial



Coffee/Tea

If your child has a dummy, DO NOT put anything sweet on it.



Clean your child's dummy under running water NOT in your mouth. Avoid sharing spoons with your child.

If bottle feeding



Take the bottle away when your child has finished.



DON'T let your child keep sucking on the bottle too long. Give up the bottle by 1 year.



At 6 months your child can use a cup.

Put your child to bed WITHOUT a bottle





The future

- > Improve the oral health of 0-5 year olds
- > Increase types of health professional participating
- > Increase number of younger children being assessed
- > Oral health seen as an integral part of general health and well being to health professionals
- > Decrease in the number of admissions for general anaesthetic for dental treatment
- > Include program for pregnant women
- > Decreased financial burden to the health sector



Christine Morris

Director

Health Promotion

SA Dental Service

christine.morris@health.sa.gov.au