

Health Promotion Plan for the Development of Children

Chi-Wen Lin

I-Chun Lee

Yi-Hsuan Wang

Buddhist Taichung Tzu Chi General Hospital, Taiwan

1





Taichung Tzu-Chi Hospital



大林慈院



關山分院

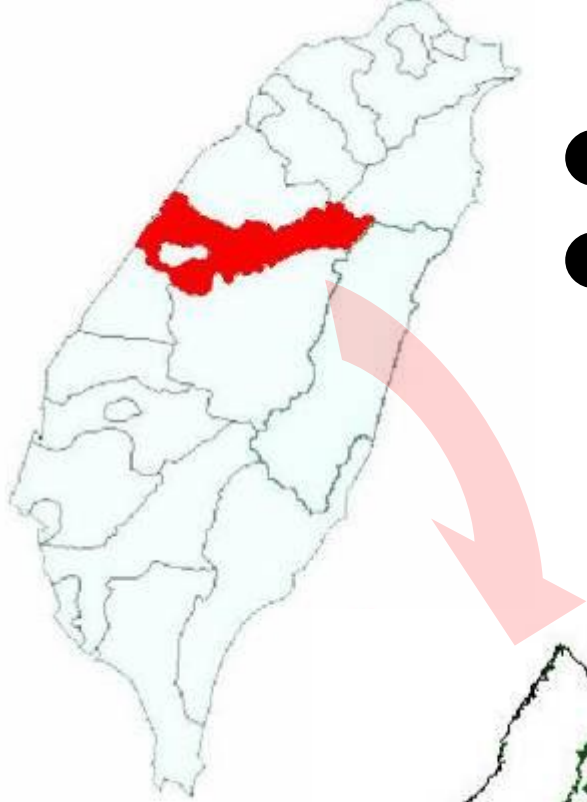


Tzu-Chi Hospital



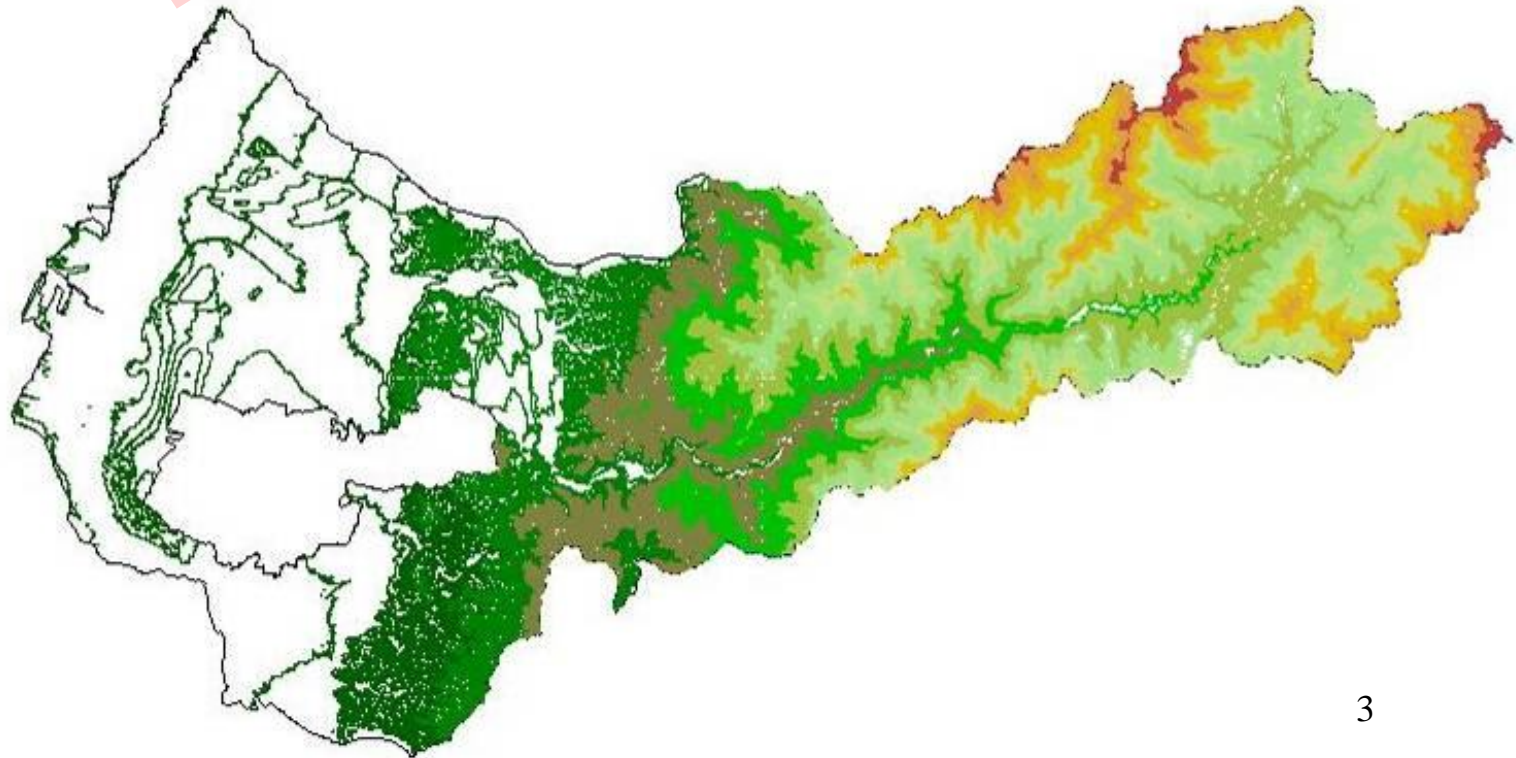
Taipei Tzu-Chi Hospital





- Remote geographic inconvenience
- Poor awareness about development

→ Incidence lower than predicted
→ Delay of early intervention





840 ~ 1,120 children with risk of developmental delay per year

From Public Health Bureau Taichung County, Taiwan 2008



Early Intervention

Early intervention for developmental delay of children

- ✓ Early screening
- ✓ Inter-disciplinary
- ✓ Continuity of care



The Buddhist Taichung Tzu-Chi General Hospital



Chairman-Superintendent



**Children Development
Rehabilitation Center**



Children Development Rehabilitation Center



**Early
Evaluation**



**Early
Treatment**

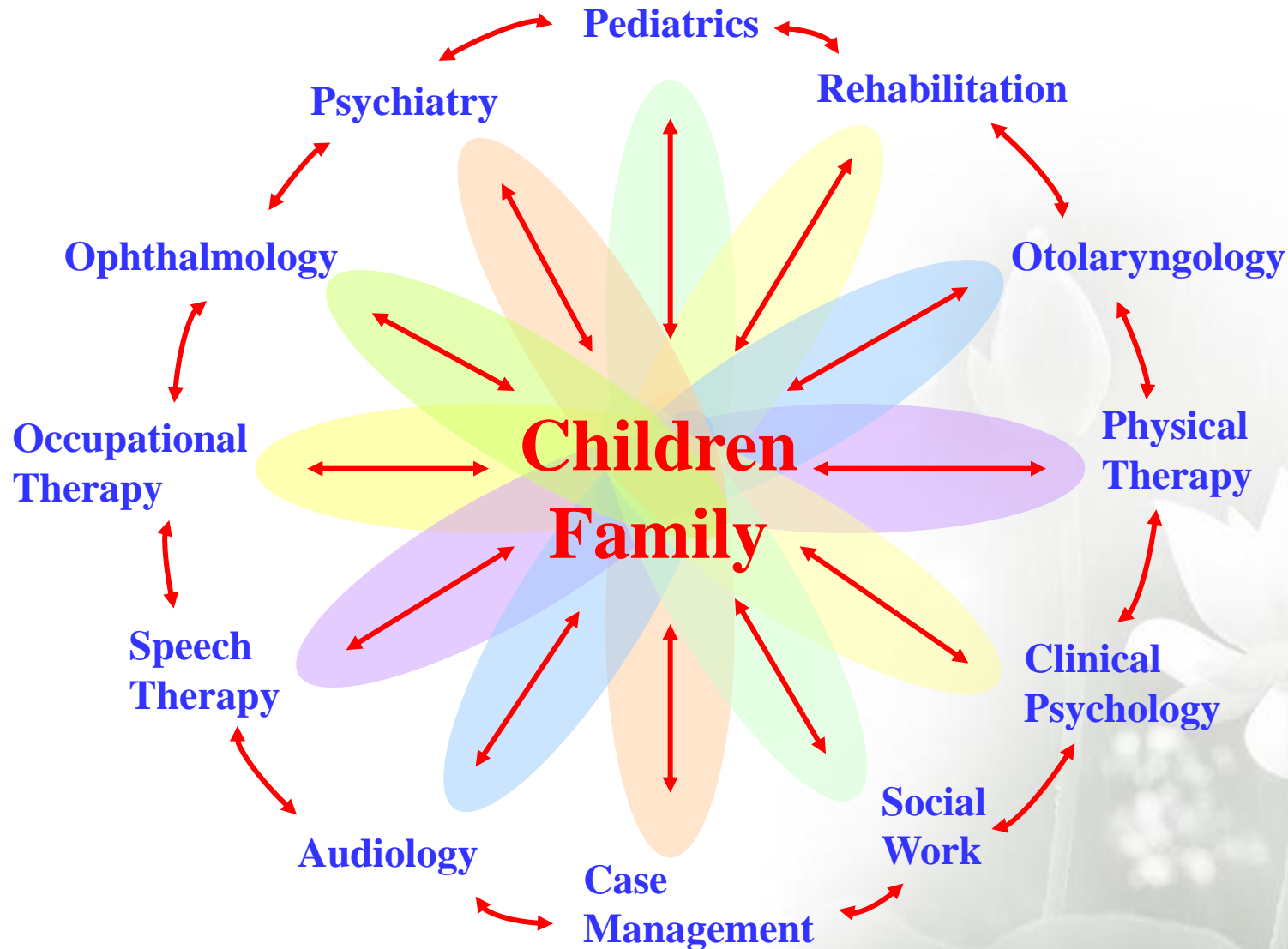


Integration



**Family
Participation**

Inter-disciplinary Team



Purpose

- ✓ Construct the community care network
- ✓ Parents education



Method



- ✓ Inter-disciplinary team work
- ✓ Services network with Public Health Centers
- ✓ Parents education

From Apr. to Nov. 2010





Lishan

Altitude 1980m

Distance 154 Km

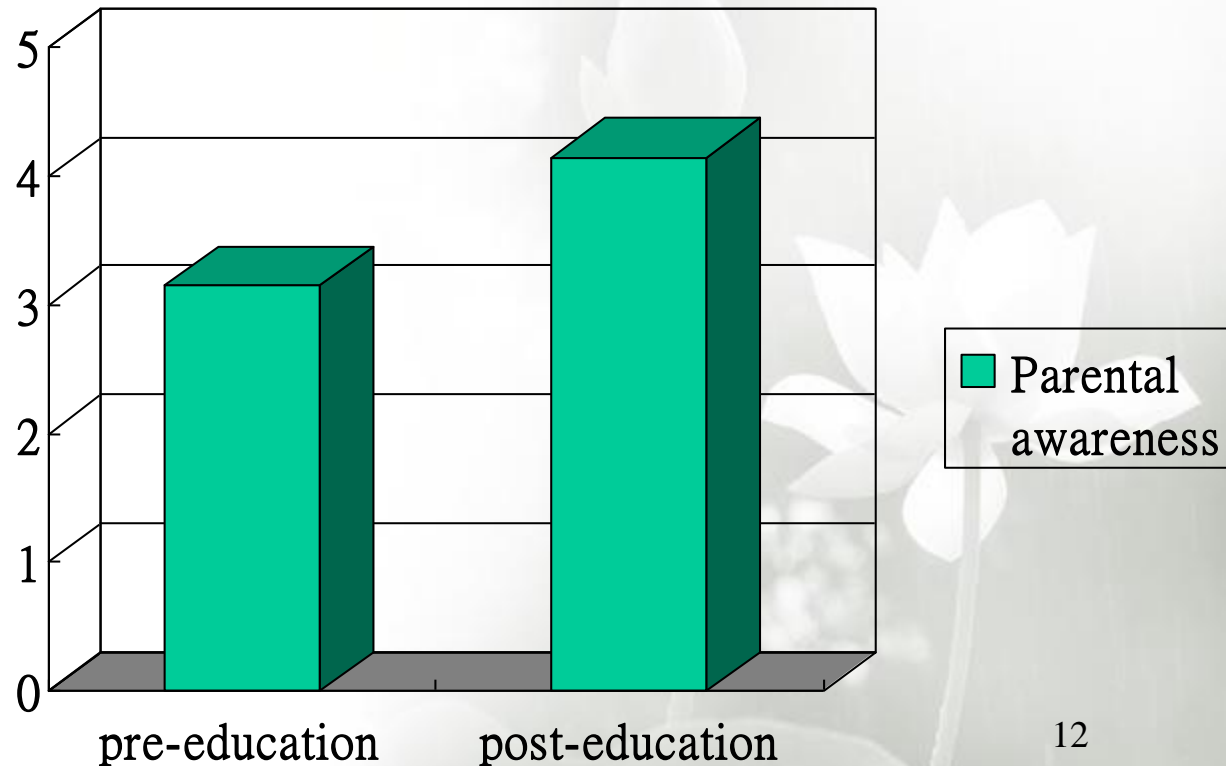
Geographic inconvenience

Fewer medical resource



Result

- ✓ Revealed 9~12% predicted amount of children
- ✓ ↑25% awareness of parents about development



Conclusion

↑ Children developmental care by providing the integrated services with public health centers and parents education.



ACKNOWLEDGMENTS

This plan was supported by a grant from the Public Health Bureau Taichung County and Taiwan Public Welfare Lottery , Ministry of the Interior

