

Social Interventions, Advocacy and Community Empowerment: Embedding Action on Social Risks to Health in Primary Care

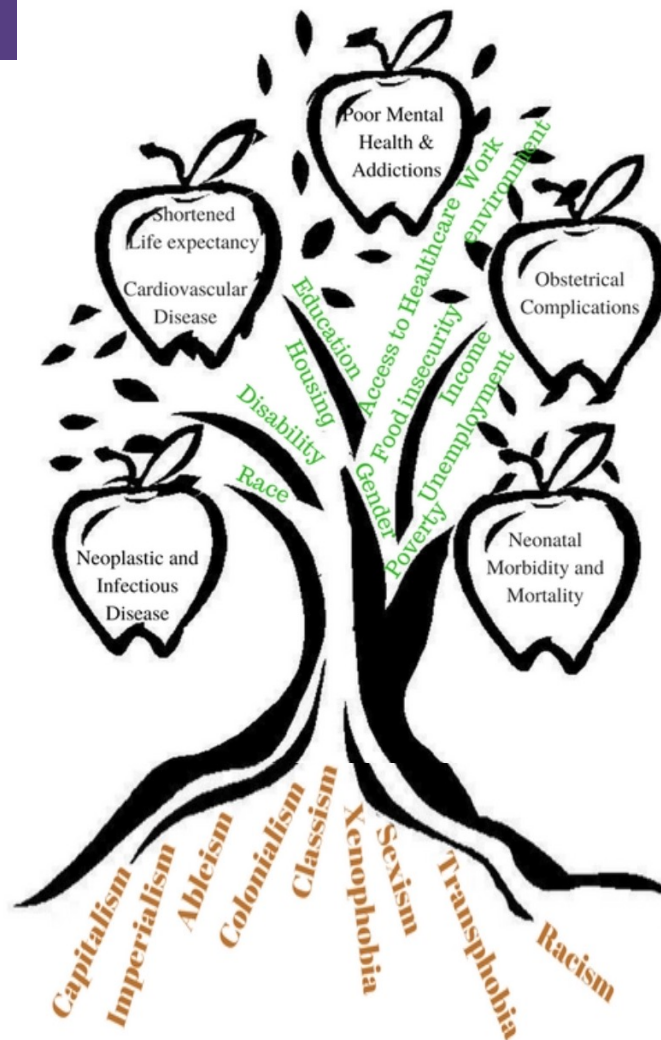
Gary Bloch MD CCFP; Associate Professor, University of Toronto
St. Michael's Hospital Academic Family Health Team, Toronto

International Health Promoting Hospitals Conference
Hiroshima, November 7, 2024

“If medicine is to fulfil her great task, then she must enter the political and social life. Do we not always find the diseases of the populace traceable to defects in society?”

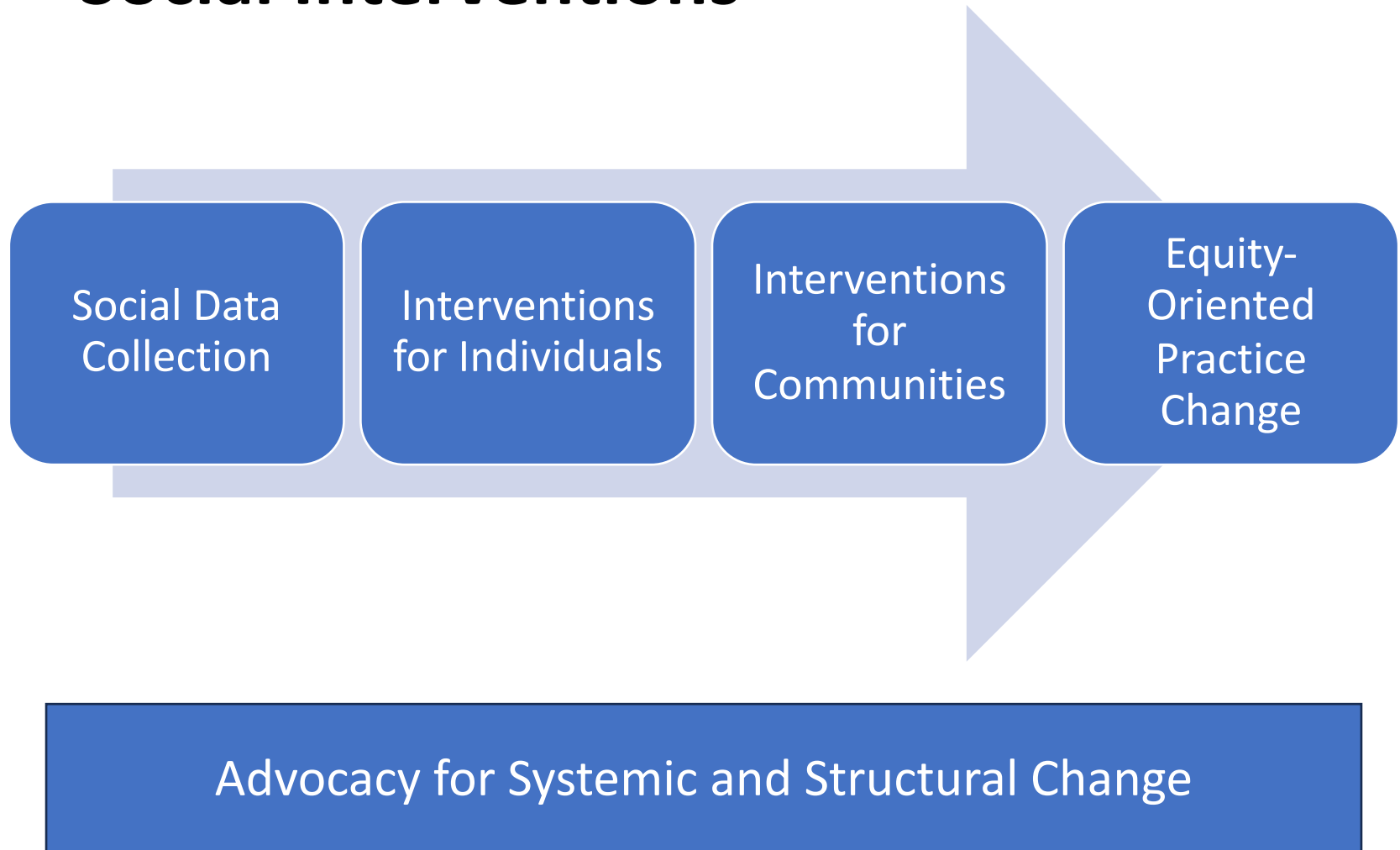
- Rudolph Virchow

The Social Determinants of Health



Nanky Rai, "Uprooting Medical Violence: Building An Integrated Anti-Oppression Framework for Primary Health Care," <https://goo.gl/XkZztY>

Social Interventions



Global leaders in the teaching, study and practice of equity-driven primary health care and advocacy



To improve health through advocacy, equity and world-leading primary health care, teaching and research

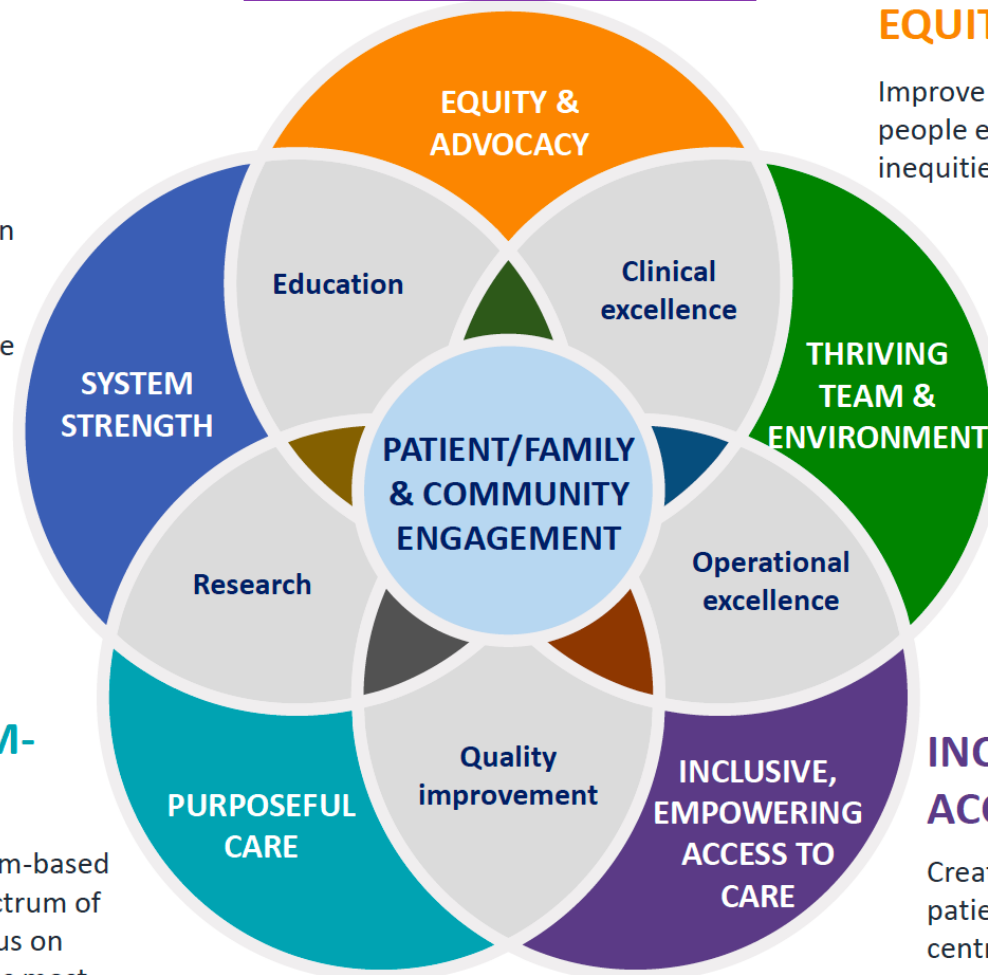
Department of Family and Community Medicine Academic Family Health Team Strategic Plan 2020-2025

SYSTEM STRENGTH

Partner with others to create an integrated healthcare system and share our knowledge and expertise, develop and innovate solutions, and collaborate on research.

PURPOSEFUL TEAM-BASED CARE

Optimize our models of team-based care to provide the full spectrum of high-quality care with a focus on those who need our services most.



EQUITY & ADVOCACY

Improve the health and lives of people experiencing structural inequities.

SUSTAINABLE THRIVING TEAM AND ENVIRONMENT

Strengthen our own wellbeing to cultivate resilience in all aspects of our work and prioritize sustainable environmental choices.

INCLUSIVE, EMPOWERING ACCESS TO CARE

Create multiple pathways to empower patients to access care through patient-centred technology and virtual care.

Our Team

Our Current Staff



266
Staff

6.1 FTE



80
Physicians

43.6 FTE



38
Resident Physicians

23.7 FTE



7
NPs

6.1 FTE



56
Clerical Staff

39.6 FTE



28
Health Disciplines

22.9 FTE



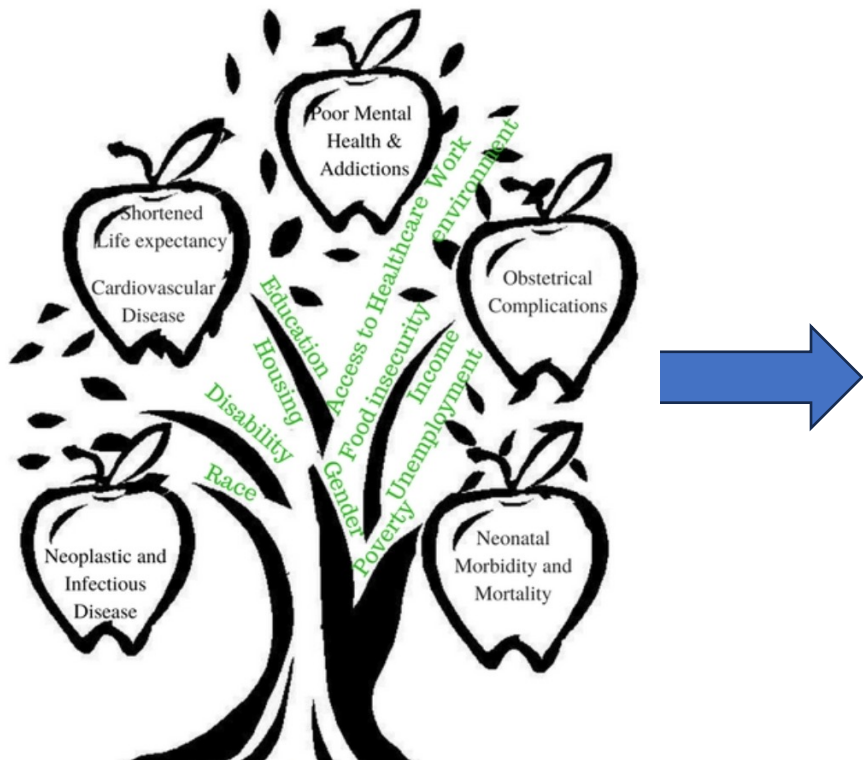
18 FTE

- 266 staff, 80 physicians, 38 resident physicians, 28 health discipline staff, 56 clerical team
- Integrated partnerships with chiropractic college, psychology training program
- Serving 50 000 rostered patients



Practising equity- focused health care

How St. Michael's Hospital
Academic Family Health Team
works to address the social
determinants of health



- **Health Equity Data Collection**
- **Income Security Health Promotion**
- **Health Justice Project**
- **Reach out and Read**



- **Anti-Racism**
- **Decolonization & Indigenous Cultural Safety**
- **Accessibility for All**
- **Advocacy**

What's Missing? What's Next?

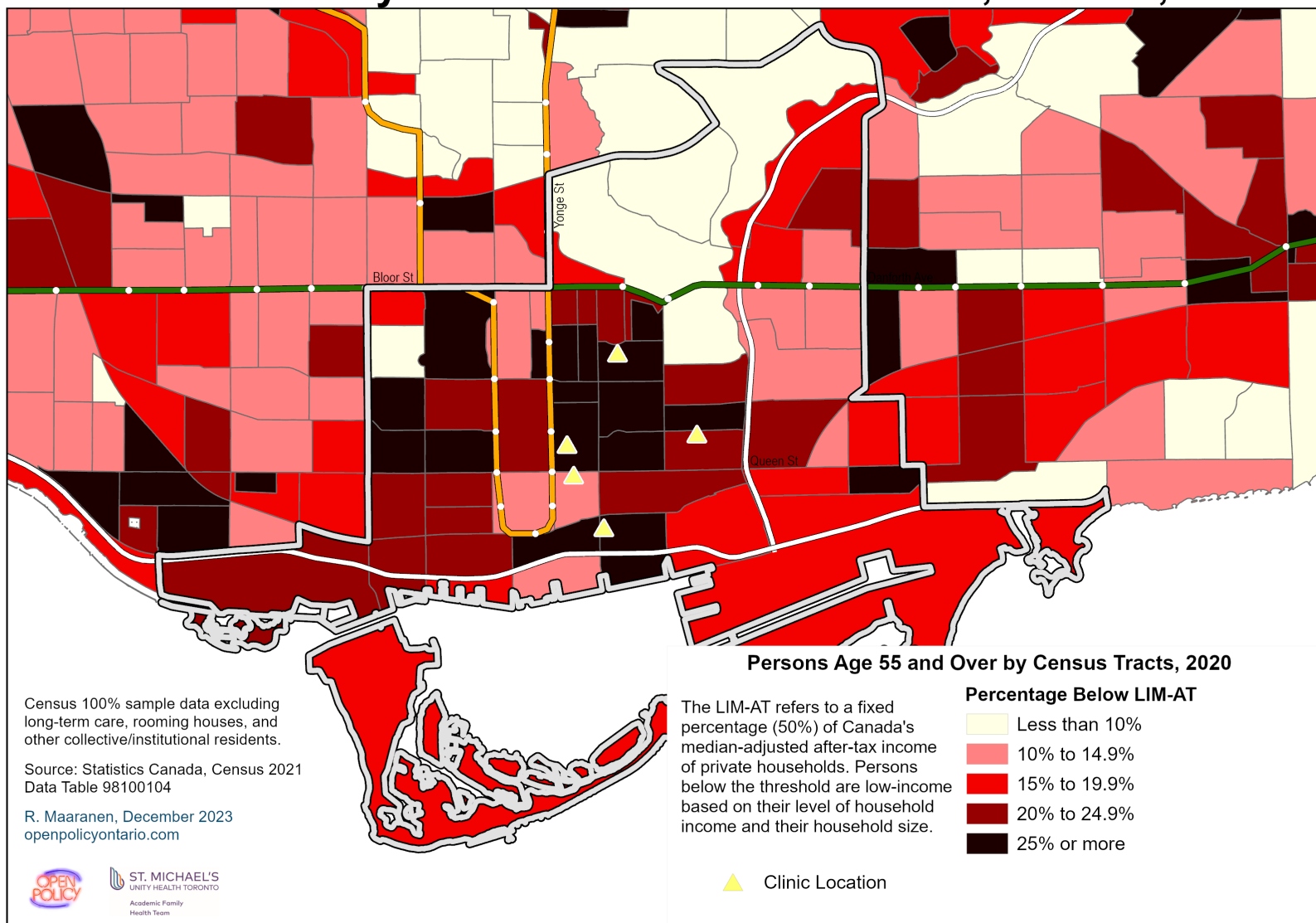
- ❖ Population Health Focus
- ❖ Community Leadership and Empowerment
- ❖ Health Team Culture Transformation
- ❖ System Transformation

The SEED Social Prescribing Program



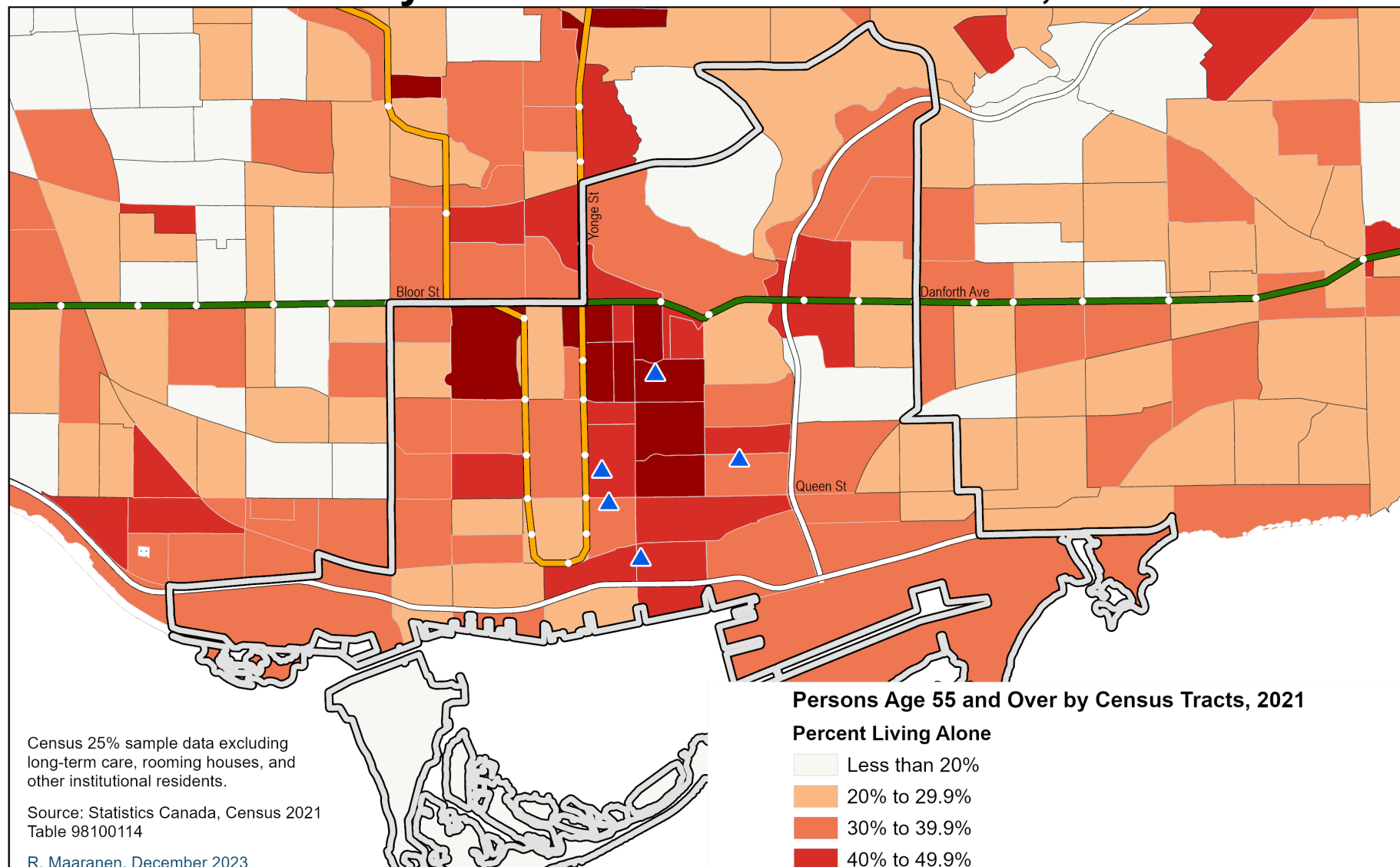
Population Health Focus

Age 55 and Over Low-Income Rate, After-Tax Income (LIM-AT) St. Michael's Family Health Team Catchment Area, Toronto, 2020

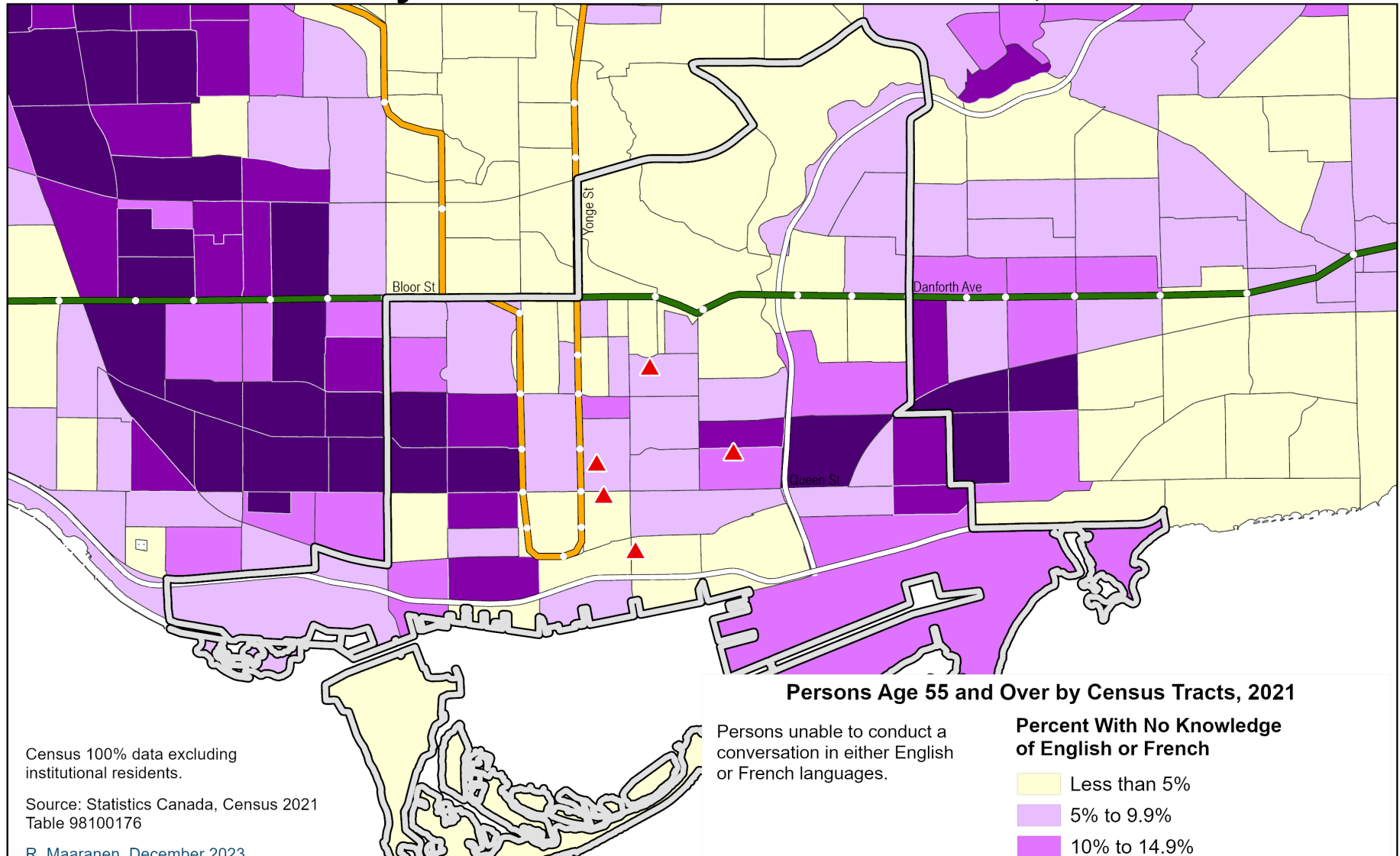


Age 55 and Over Living Alone Percent, 2021

St. Michael's Family Health Team Catchment Area, Toronto



Age 55 and Over, No Knowledge of English or French, 2021 St. Michael's Family Health Team Catchment Area, Toronto



Community Leadership & Empowerment

Community leadership



Community Development and Empowerment



ST. JAMES TOWN

Green Cafe

HOT, FRESH & VEGETARIAN MEALS

Health Team Culture Transformation

Team Integration

- *Novel health team positions*: Link Workers and CHWs
 - Challenges with Hospital HR
- *Internal referral and record-keeping* processes to align with current practice
- Initial learnings: <https://journals.sagepub.com/doi/full/10.1177/08404704241263831>

Team Socialization

- Presentations, team retreat, training video, integration with other interprofessional initiatives

PowerPoint Slide Show - [Social Prescribing Training-Apr 5]



Health Equity, Social Intervention and Community Health Programs

St. Michael's Hospital Academic Family Health Team

Orit Adose, Sandesh Basnet, Mikhaila Bernales, Gary Bloch, Deborah Kopansky-Giles, Braden O'Neill, Nassim Vahidi-Williams, Abban Yusuf

ST. MICHAEL'S
UNITY HEALTH TORONTO

Academic Family Health Team

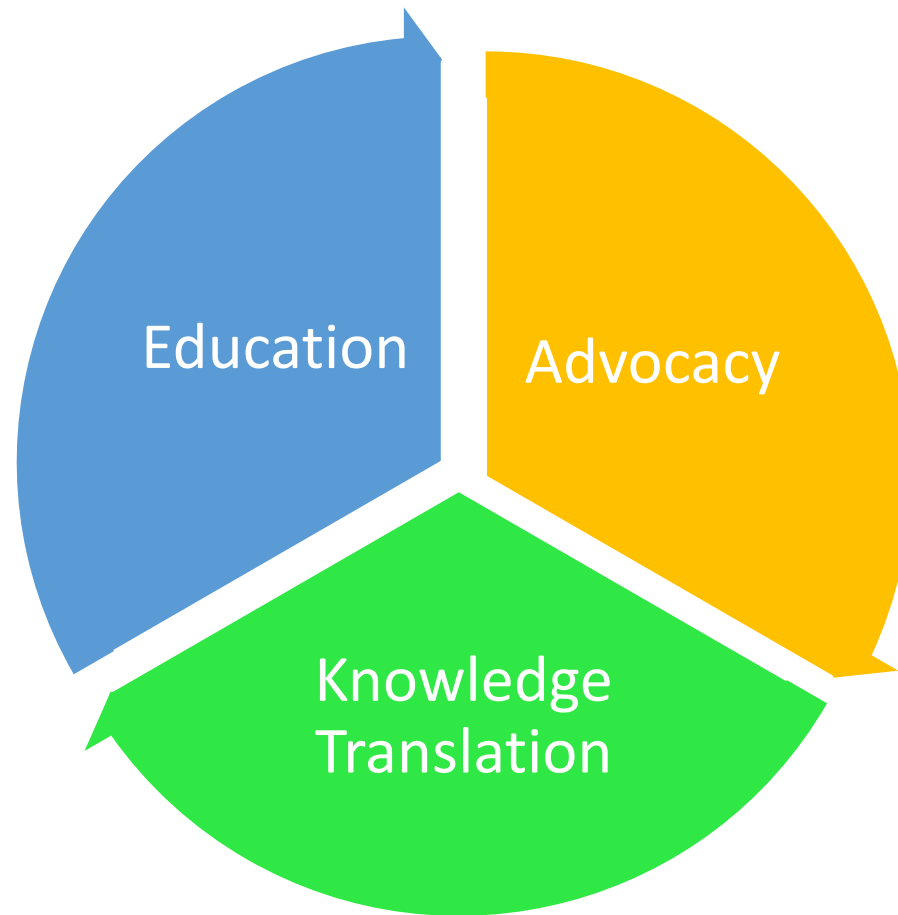
SEED
SUPPORT EQUITY ENGAGEMENT & DIGNITY

Foundation for Advancing Family Medicine / Fondation pour l'avancement de la médecine familiale

0:00 / 52:55

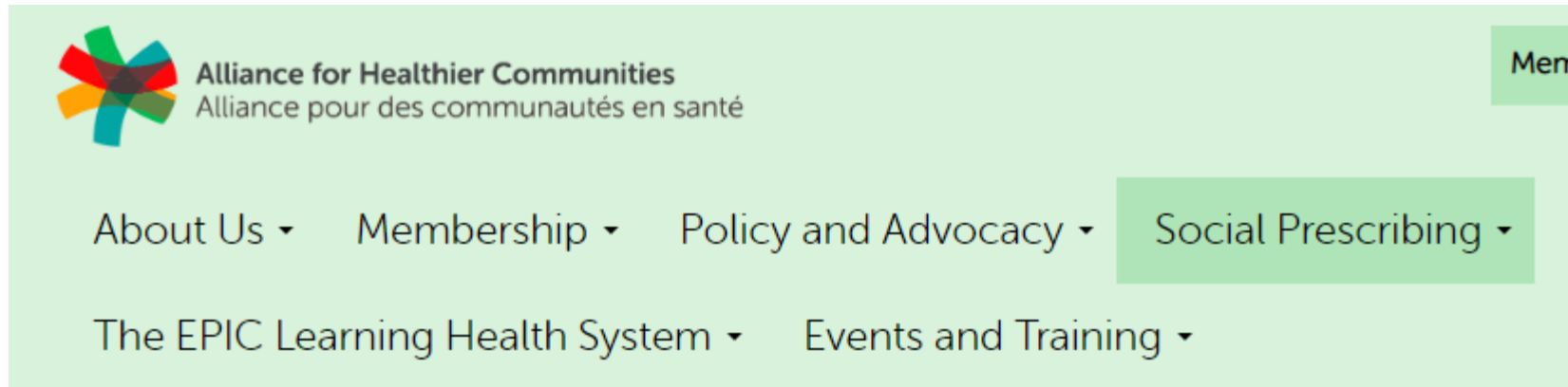
Employment and Social Development Canada / Emploi et Développement social Canada

System Transformation



NEW RESOURCE: Online Training Modules

To help organizations implement social prescribing, we've created health equity-focused, online Social Prescribing training modules designed for healthcare teams interested in starting or improving their social prescribing process.



Social Prescribing - Online Course

[Home](#)[Social Prescribing](#)[Social Prescribing - Online Course](#)

Individual, Community, Social Wellbeing

Define
Social
Needs

Intervene
with
Individuals

Intervene
with
Communities

Support
Social
Change



Let Stories Lead Action

Change Within Ourselves

Create Safe Health Care Spaces

Build Communities of Support

Shift Health Systems & Education

Social & Structural Risks to Health